



**Zona-Lize Hayward**  
Principal Property Practitioner  
Registered with PPRA (FFC 202 322 464 4)  
0834525588  
zhayward@ikonic.co.za

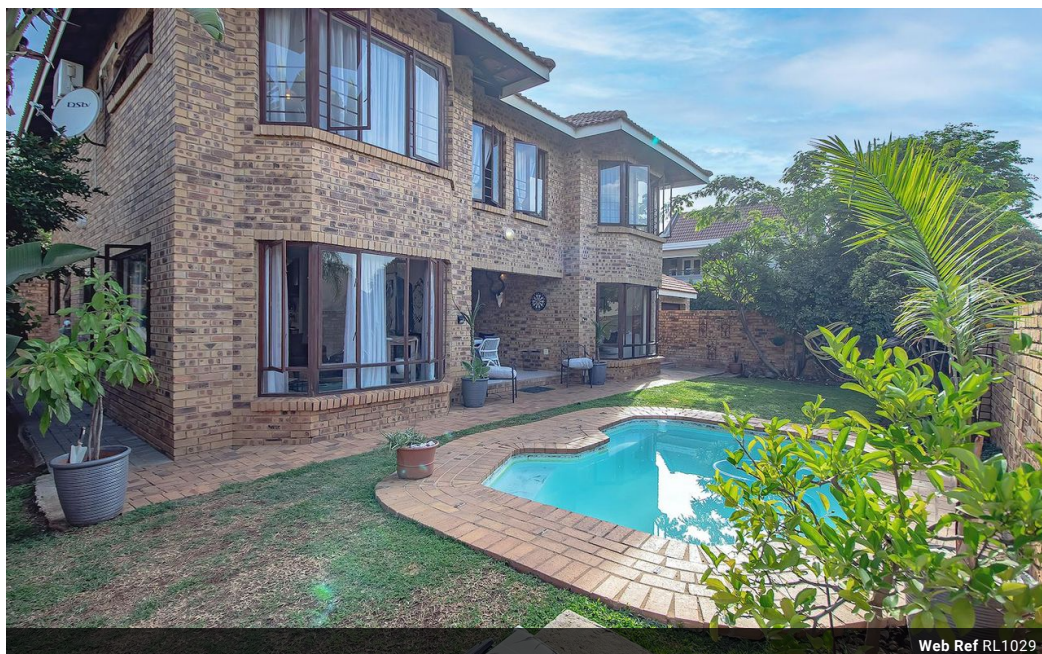


**Martin Hayward**  
Principal Property Practitioner  
Registered with PPRA (FFC 202 322 311 5)  
0834525599  
martin@ikonic.co.za

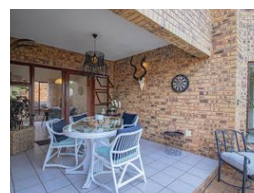
Contact Head Office

083 452 5599

Silver Lakes Golf Estate



Web Ref RL1029



**R4,250,000**

3 2.5 2

**Monthly Bond Repayment** R43,147.23

Calculated over 20 years at 10.75% with no deposit.

**Transfer Costs** R313,341.00 **Bond Costs** R55,380.00

These calculations are only a guide. Please ask your conveyancer for exact calculations.

**Monthly Levy** R2,710 **Monthly Rates** R2,300

### Meticulously Maintained Family Home in Silver Lakes Golf Estate

A north-facing low maintenance home designed for easy upkeep, reducing the time and effort required for maintenance tasks. A family home that receives ample natural light throughout the day, creating a bright and welcoming atmosphere. Situated on a quiet street, providing a peaceful and serene living environment. The property includes a private patio that offers views of a sparkling pool and established garden. This outdoor area provides a tranquil setting for relaxation and entertainment.

The interior features spacious and flowing open-plan reception areas, allowing for versatile use of the space. This layout can create a sense of openness and connection between different living areas. A well-equipped kitchen provides ample workspace and cupboards, making it convenient for cooking and storage. Additionally, there is a...

### Features

<b>Pets Allowed</b>	Yes				
<b>Interior</b>		<b>Exterior</b>		<b>Sizes</b>	
Bedrooms	3	Garages	2	Floor Size	251m <sup>2</sup>
Bathrooms	2.5	Security	Yes	Land Size	500m <sup>2</sup>
Recep. Rooms	4	Dom. Accom.	0.5		
Studies	1	Pool	Yes		
Furnished	No	Views	False		

