



**Zona-Lize Hayward**  
Principal Property Practitioner  
Registered with PPRA (FFC 202 322 464 4)  
0834525588  
zhayward@ikonic.co.za

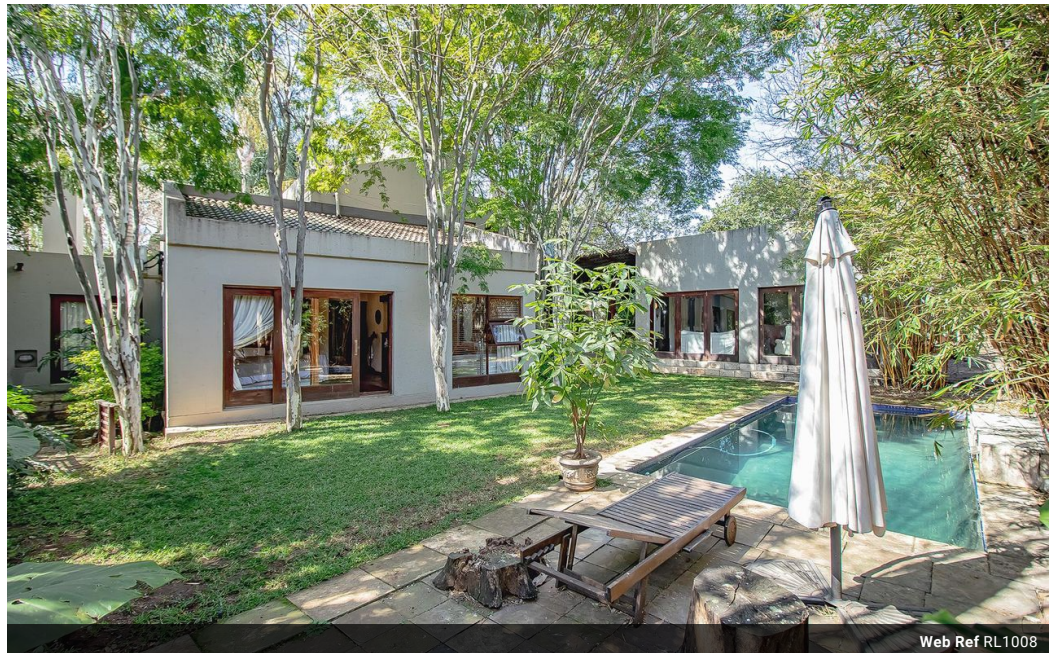


**Martin Hayward**  
Principal Property Practitioner  
Registered with PPRA (FFC 202 322 311 5)  
0834525599  
martin@ikonic.co.za

Contact Head Office

083 452 5599

Silver Lakes Golf Estate



Web Ref RL1008



**R4,500,000**

4 3.5 2

**Monthly Bond Repayment** R45,685.30

Calculated over 20 years at 10.75% with no deposit.

**Transfer Costs** R343,009.00 **Bond Costs** R57,265.00

These calculations are only a guide. Please ask your conveyancer for exact calculations.

**Monthly Levy** R2,205 **Monthly Rates** R2,082

### Tranquil Family Haven in Silver Lakes Golf Estate

Nestled within a lush and maintained garden adorned with an efficient irrigation system, this property emanates an air of tranquility, charm - complimented by loads of ambience. The garden itself is a verdant oasis, offering a soothing escape from the bustle of everyday life. A highlight of the property is the private pool area, a retreat designed for relaxation and recreation. The pool area provides a refreshing haven to unwind, bask in the sun, or enjoy a leisurely swim in an inviting atmosphere. Both indoor and outdoor entertainment areas are carefully crafted to cater to your social desires. Whether you prefer the comfort of indoor gatherings or the allure of outdoor soirees, this property accommodates both. These spaces are perfect for hosting friends and family or simply enjoying quiet moments of solitude. The interior...

### Features

Pets Allowed		Yes			
Interior		Exterior		Sizes	
Bedrooms	4	Garages	2	Floor Size	386m²
Bathrooms	3.5	Carports / Parkings	2	Land Size	1,000m²
Recep. Rooms	4	Security	Yes		
Studies	0.5	Pool	Yes		

