



Martin Hayward
Principal Property
Practitioner
Registered with PPRA
(FFC 202 322 311 5)
0834525599
martin@ikonic.co.za

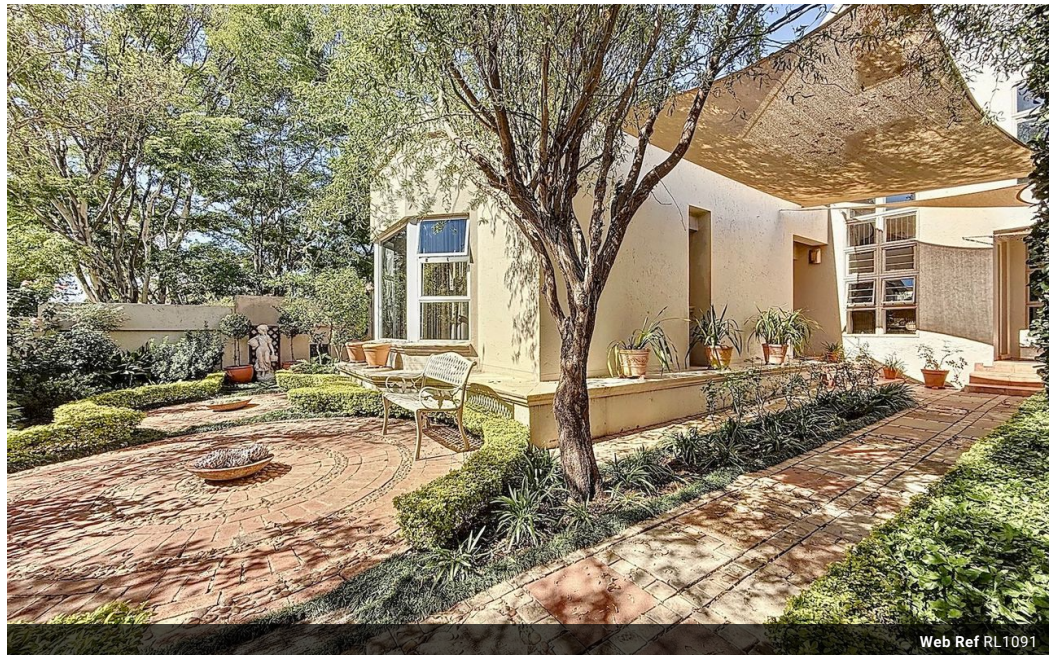


Zona-Lize Hayward
Principal Property
Practitioner
Registered with PPRA
(FFC 202 322 464 4)
0834525588
zhayward@ikonic.co.za

Contact Head Office

083 452 5599

Silver Lakes Golf Estate



Web Ref RL1091



R3,750,000

3 3 2

Monthly Bond Repayment R38,071.09

Calculated over 20 years at 10.75% with no deposit.

Transfer Costs R251,382.00 **Bond Costs** R49,725.00

These calculations are only a guide. Please ask your conveyancer for exact calculations.

Monthly Levy R2,800 **Monthly Rates** R1,680

Immaculate Turnkey Home in Silver Lakes Golf Estate

Jointly marketed. Perfectly positioned within walking distance to the clubhouse, this pristine lock-up-and-go residence offers the ultimate blend of style, convenience, and low-maintenance luxury. From the moment you step through the striking double-volume entrance, you're greeted by an abundance of natural light and a sense of calm sophistication that flows effortlessly throughout the home. Expansive, light-filled living and dining areas radiate warmth and ambiance, flowing seamlessly into a separate TV lounge for more intimate moments. Stack-away doors seamlessly transitions to a beautifully landscaped, low-maintenance garden that invites relaxation and effortless outdoor living. At the heart of the home lies a custom-designed kitchen that will delight any culinary enthusiast. Thoughtfully planned with ample workspace,...

Features

| | |
|---------------------|-----|
| Pets Allowed | Yes |
| Interior | |
| Bedrooms | 3 |
| Bathrooms | 3 |
| Kitchens | 1 |
| Recep. Rooms | 3 |
| Studies | 1 |
| Furnished | Yes |

| | |
|---------------------|-------|
| Exterior | |
| Garages | 2 |
| Carports / Parkings | 2 |
| Security | Yes |
| Dom. Accom. | 1 |
| Pool | No |
| Views | False |

| | |
|--------------|-------------------|
| Sizes | |
| Floor Size | 275m ² |
| Land Size | 512m ² |