



**Zona-Lize Hayward**  
Principal Property  
Practitioner  
Registered with PPRA  
(FFC 202 322 464 4)  
0834525588  
zhayward@ikonic.co.za

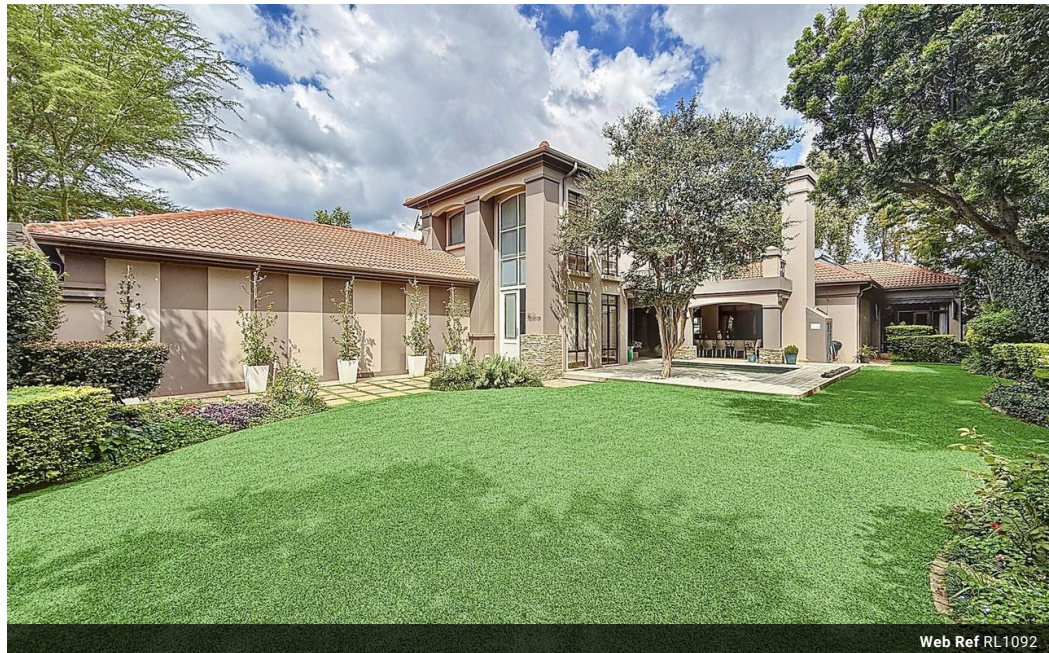


**Martin Hayward**  
Principal Property  
Practitioner  
Registered with PPRA  
(FFC 202 322 311 5)  
0834525599  
martin@ikonic.co.za

Contact Head Office

083 452 5599

Silver Lakes Golf Estate



Web Ref RL1092



**R7,400,000**

4 3.5 3

**Monthly Bond Repayment** R75,126.94

Calculated over 20 years at 10.75% with no deposit.

**Transfer Costs** R683,228.00 **Bond Costs** R75,285.00

These calculations are only a guide. Please ask your conveyancer for exact calculations.

**Monthly Levy** R2,850 **Monthly Rates** R2,694

### A Lifestyle of Effortless Elegance in Silver Lakes Golf Estate

Tucked away in a very quiet and popular street, this exceptional turnkey residence masterfully balances contemporary luxury with the warmth of home. From the moment you step through the grand double-volume entrance, you're drawn into a world of light, space, and timeless sophistication. Every inch of this beautifully crafted family home has been thoughtfully designed to offer a lifestyle that is as luxurious as it is inviting.

Generous open-plan living areas flow effortlessly into one another, anchored by a formal lounge where a charming fireplace invites cozy evenings. Double French doors on both sides of the fireplace open up to lush and tranquil surroundings, blurring the lines between indoor comfort and outdoor serenity. The homes seamless indoor – outdoor flow extends to the expansive L-shaped entertainers patio – complete...

### Features

Pets Allowed		Yes			
Interior		Exterior		Sizes	
Bedrooms	4	Garages	3	Floor Size	499m²
Bathrooms	3.5	Carports / Parkings	2	Land Size	1,000m²
Kitchens	1	Security	Yes		
Recep. Rooms	4	Dom. Accom.	1		
Studies	1	Pool	Yes		
Furnished	No	Views	False		