



Zona-Lize Hayward
Principal Property Practitioner
Registered with PPRA (FFC 202 322 464 4)
0834525588
zhayward@ikonic.co.za



Martin Hayward
Principal Property Practitioner
Registered with PPRA (FFC 202 322 311 5)
0834525599
martin@ikonic.co.za

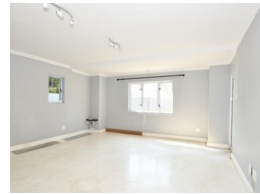
Contact Head Office

083 452 5599

Silver Lakes Golf Estate



Web Ref RL853



R3,200,000

3 3 2

Monthly Bond Repayment R32,487.33

Calculated over 20 years at 10.75% with no deposit.

Transfer Costs R184,379.00 **Bond Costs** R44,070.00

These calculations are only a guide. Please ask your conveyancer for exact calculations.

Monthly Levy R2,800 **Monthly Rates** R1,494

The Ideal Lock-Up and Go in Silver Lakes Golf Estate

Ideally situated in quiet surroundings. Light and bright with spacious open plan living areas - opening up to a small private garden with splash pool. Also on offer is an open plan kitchen with separate scullery, 3 spacious bedrooms (two en-suite) and 3 bathrooms and two automated garages.

Features

Pets Allowed Yes

Interior

Bedrooms	3
Bathrooms	3
Recep. Rooms	2
Furnished	No

Exterior

Garages	2
Security	Yes
Dom. Accom.	0.5
Pool	Yes
Views	False

Sizes

Floor Size	250m ²
Land Size	456m ²

Extras

3 Air Conditioners Fire Place